

University of Vermont

**UVM ScholarWorks**

---

College of Engineering and Mathematical  
Sciences Faculty Publications

College of Engineering and Mathematical  
Sciences

---

12-1-2017

## Erratum to: Instagram photos reveal predictive markers of depression (EPJ Data Science, (2017), 6, 1, (15), 10.1140/epjds/s13688-017-0110-z)

Andrew G. Reece  
*Harvard University*

Christopher M. Danforth  
*University of Vermont*

Follow this and additional works at: <https://scholarworks.uvm.edu/cemsfac>



Part of the [Human Ecology Commons](#), and the [Medicine and Health Commons](#)

---

### Recommended Citation

Reece, Andrew G. and Danforth, Christopher M., "Erratum to: Instagram photos reveal predictive markers of depression (EPJ Data Science, (2017), 6, 1, (15), 10.1140/epjds/s13688-017-0110-z)" (2017). *College of Engineering and Mathematical Sciences Faculty Publications*. 23.  
<https://scholarworks.uvm.edu/cemsfac/23>

This Article is brought to you for free and open access by the College of Engineering and Mathematical Sciences at UVM ScholarWorks. It has been accepted for inclusion in College of Engineering and Mathematical Sciences Faculty Publications by an authorized administrator of UVM ScholarWorks. For more information, please contact [scholarworks@uvm.edu](mailto:scholarworks@uvm.edu).



# Erratum to: Instagram photos reveal predictive markers of depression

Andrew G Reece<sup>1\*</sup> and Christopher M Danforth<sup>2,3,4\*</sup>

\*Correspondence:

reece@g.harvard.edu;

chris.danforth@uvm.edu

<sup>1</sup>Department of Psychology,  
Harvard University, 33 Kirkland St,  
Cambridge, MA 02138, USA

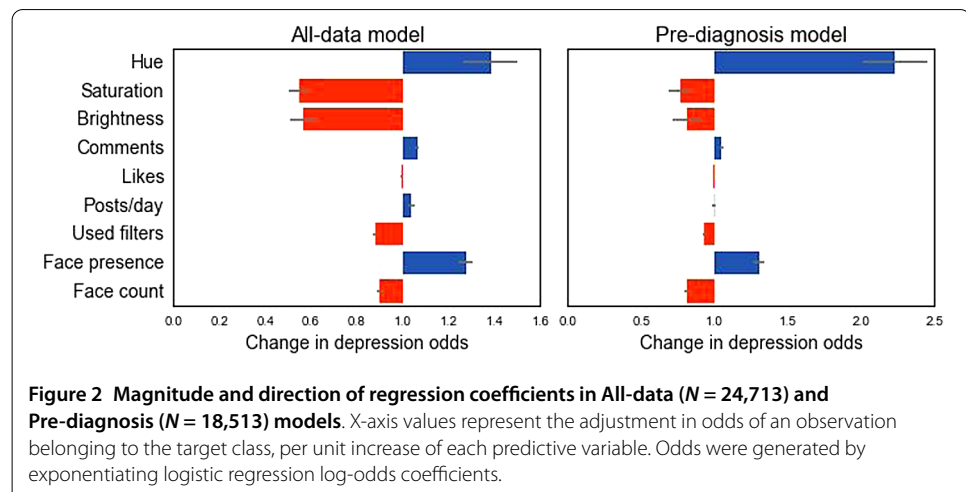
<sup>2</sup>Computational Story Lab, Vermont  
Advanced Computing Core,  
University of Vermont,  
210 Colchester Ave, Burlington, VT  
05405, USA

Full list of author information is  
available at the end of the article

## 1 Erratum

Upon publication of the original article [1], it was noticed that Figure 2 contained an error. The horizontal bars for the 'likes' row were incorrectly shown as blue. The horizontal bars for the 'likes' row should be orange. This has now been acknowledged and corrected in this erratum. The correct Figure 2 is shown below.

In the section Method, subsection Improving data quality, the sentence 'We also excluded participants with CES-D scores of 22 or higher' should read as 'We also excluded participants with CES-D scores of 21 or lower'. This has now been acknowledged and corrected in this erratum.



#### **Author details**

<sup>1</sup>Department of Psychology, Harvard University, 33 Kirkland St, Cambridge, MA 02138, USA. <sup>2</sup>Computational Story Lab, Vermont Advanced Computing Core, University of Vermont, 210 Colchester Ave, Burlington, VT 05405, USA.

<sup>3</sup>Department of Mathematics and Statistics, University of Vermont, 210 Colchester Ave, Burlington, VT 05405, USA.

<sup>4</sup>Vermont Complex Systems Center, University of Vermont, 210 Colchester Ave, Burlington, VT 05405, USA.

#### **Publisher's Note**

Springer Nature remains neutral with regard to jurisdictional claims in published maps and institutional affiliations.

Received: 24 August 2017 Accepted: 24 August 2017 Published online: 05 September 2017

#### **References**

1. Reece AG, Danforth CM (2017) Instagram photos reveal predictive markers of depression. *EPJ Data Sci* 6(1):15. doi:10.1140/epjds/s13688-017-0110-z