



Are you:

- White?
- Age 55 or older?
- A smoker?
- Have a family member with severe vision loss?

You may be at risk for
Age-Related Macular
Degeneration (AMD)

AGE-RELATED MACULAR DEGENERATION (AMD)

- ▶ **AMD is the leading cause of blindness in the United States of America**
- ▶ Vision loss due to AMD typically begins with central vision loss
- ▶ AMD is most prevalent in individuals aged 55 and older
- ▶ AMD is most prevalent in white individuals
- ▶ Smoking tobacco is one of the leading risk factors for AMD
- ▶ Family History of AMD increases your risk

Central Vision Loss Due to Age-Related Macular Degeneration (AMD)

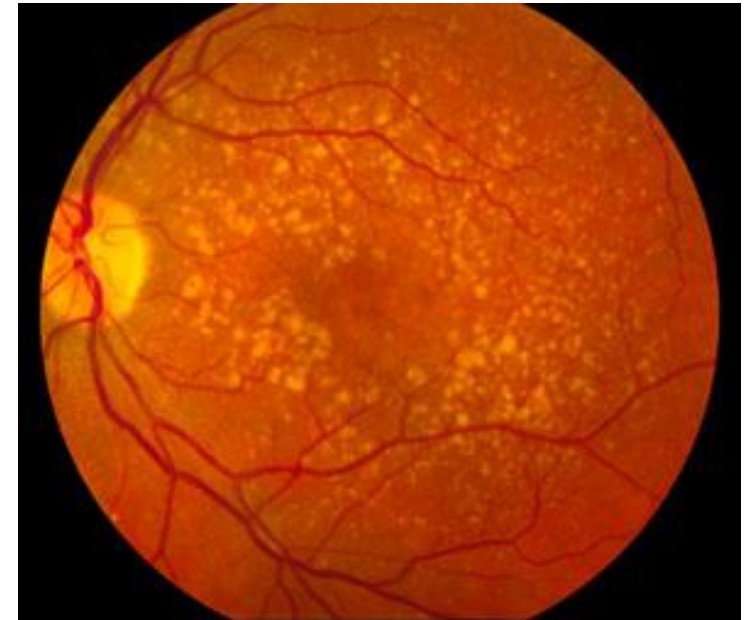


NORMAL VIEW

**VIEW WITH
MACULAR DEGENERATION**

Prevention of Age-Related Macular Degeneration (AMD)

- ▶ Early stages of AMD **CAN BE DETECTED** by examining the back of the eye.
- ▶ **Severe vision loss** due to advanced-staged AMD **CAN BE PREVENTED** with early detection and proper treatment.
- ▶ **Please alert your healthcare providers** if you have any family members with AMD or who have AMD, or if you have noticed any changes in your vision



Back of the eye (fundus)

ARE YOU?

OLDER THAN 55? WHITE? A SMOKER? IF SO....

- ◆ You may be at risk for **Age-Related Macular Degeneration (AMD)**, the leading cause of central blindness in the United States of America
- ◆ Severe vision loss due to advanced-staged AMD CAN BE PREVENTED with early detection and proper treatment.
- ◆ Please alert your healthcare providers if you have any family members with AMD or who have had AMD, or if you have noticed any changes in your vision
- ◆ **Common Visual Changes Include:** loss of central vision, straight lines become wavy, dark areas, blurry areas, white out



NORMAL VIEW

VIEW WITH
MACULAR DEGENERATION