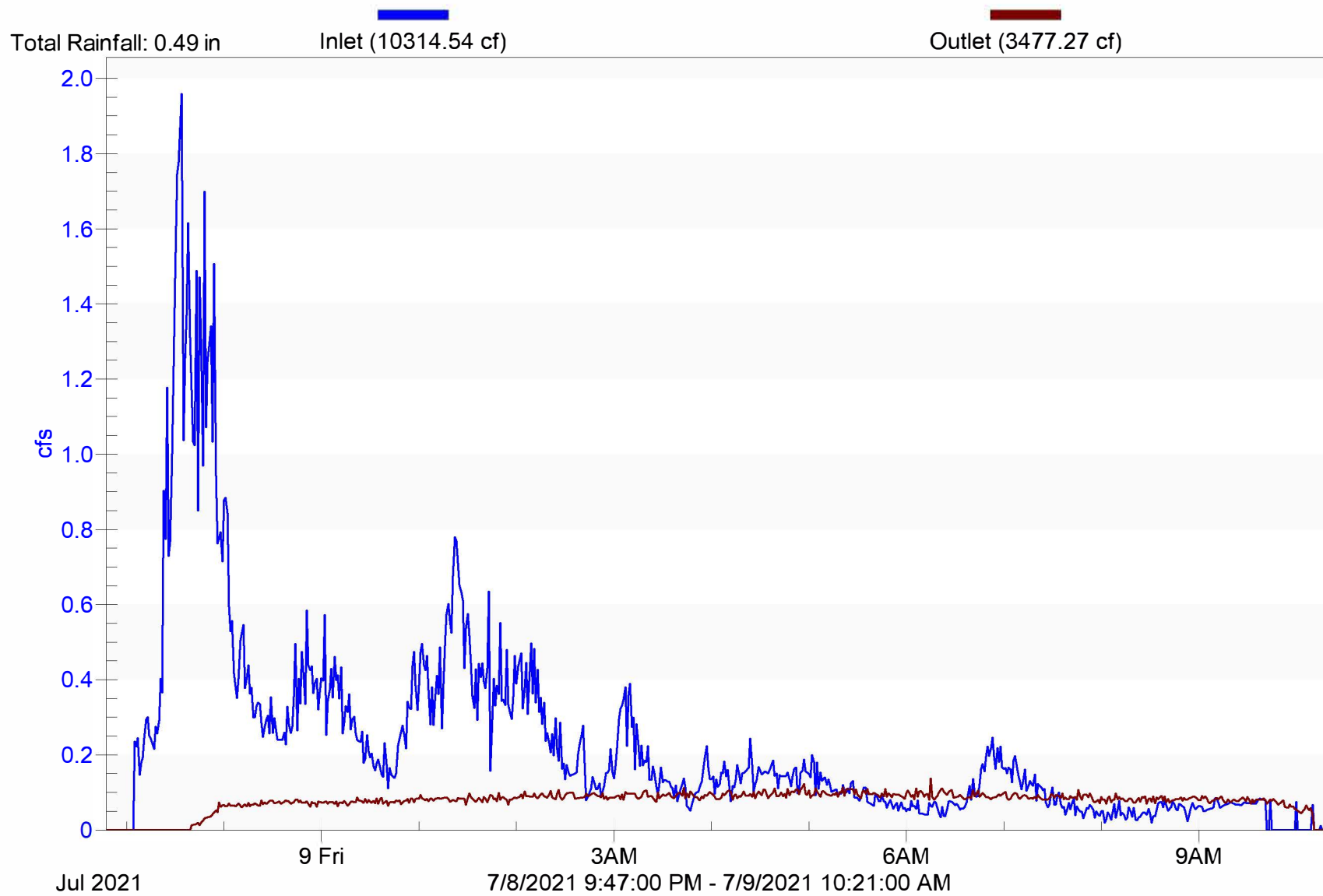


Storm 3

Kennedy Drive Wetland

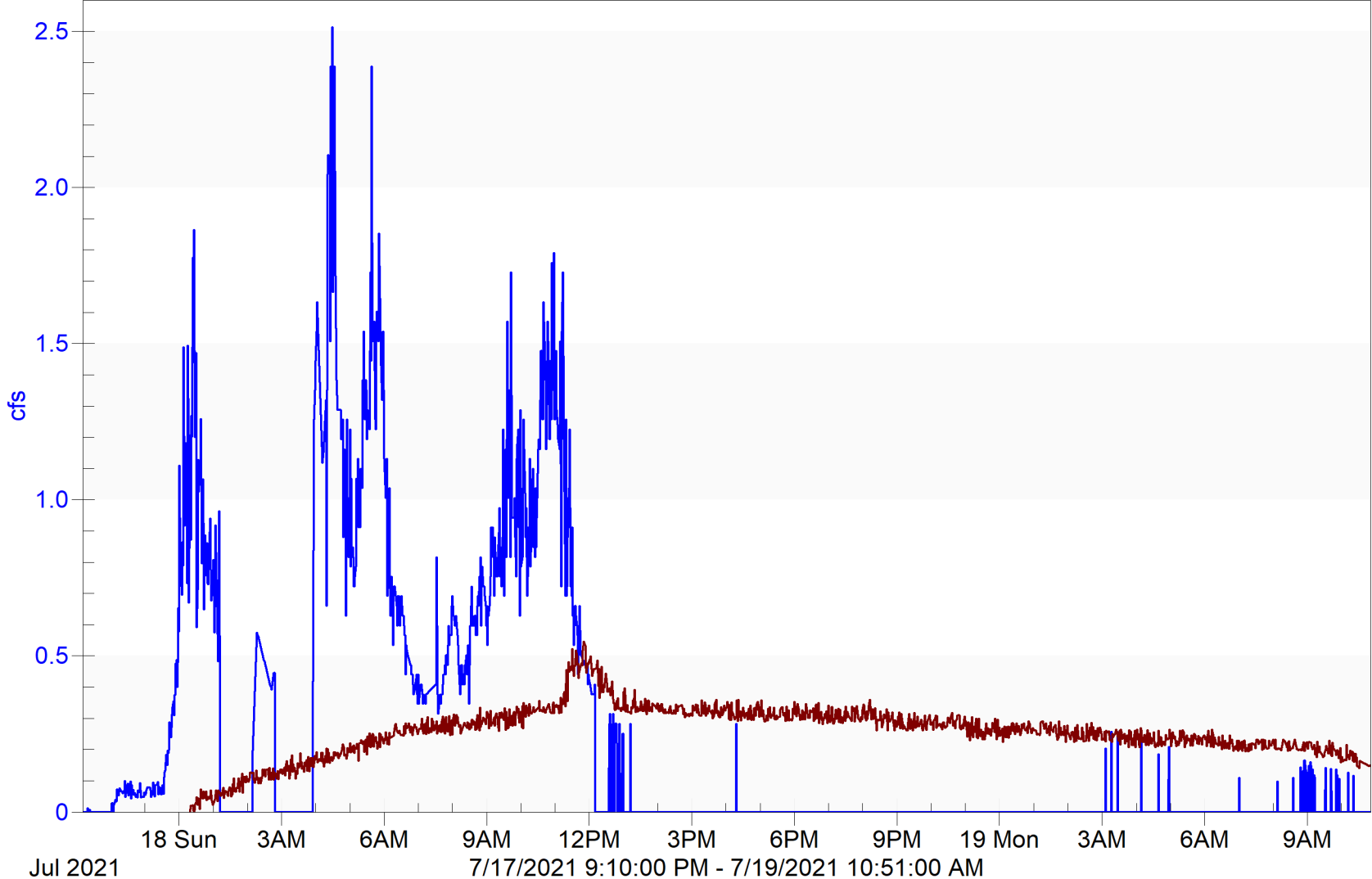


Storm 4

Kennedy Drive Wetland

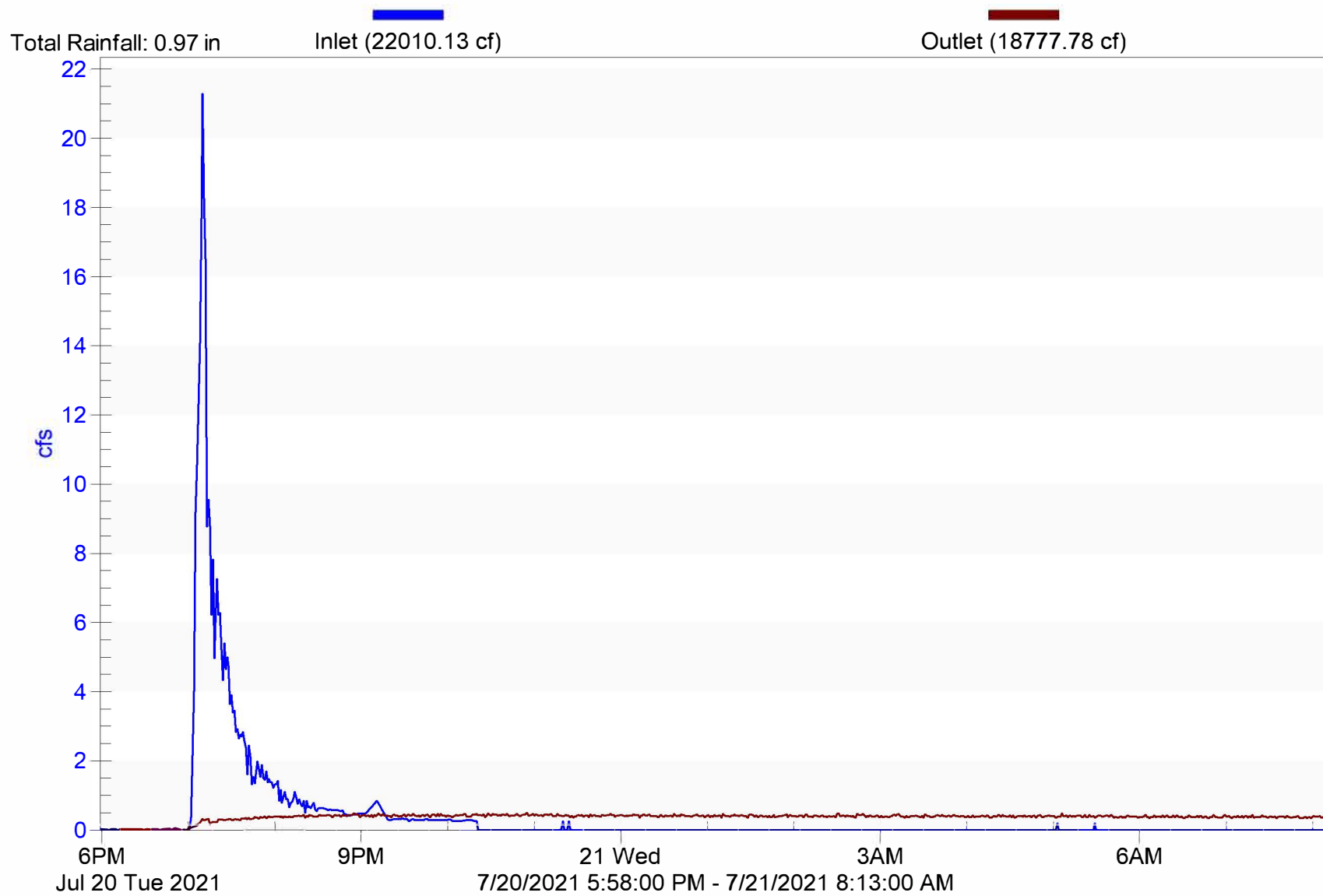
Inlet (33132.63 cf)

Outlet (30571.30 cf)



Storm 5

Kennedy Drive Wetland

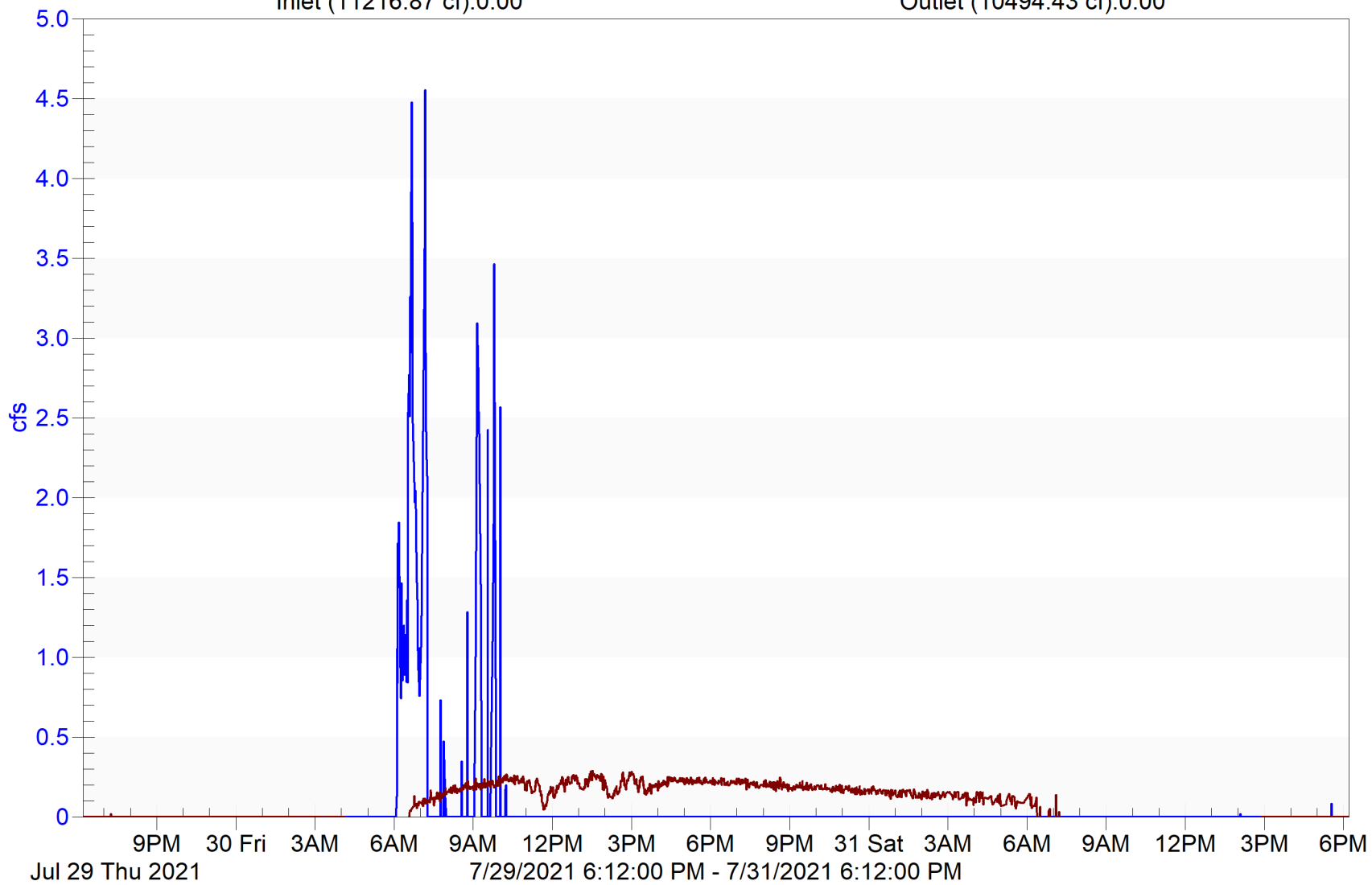


Storm 6

Kennedy Drive Wetland

Inlet (11216.87 cf):0.00

Outlet (10494.43 cf):0.00

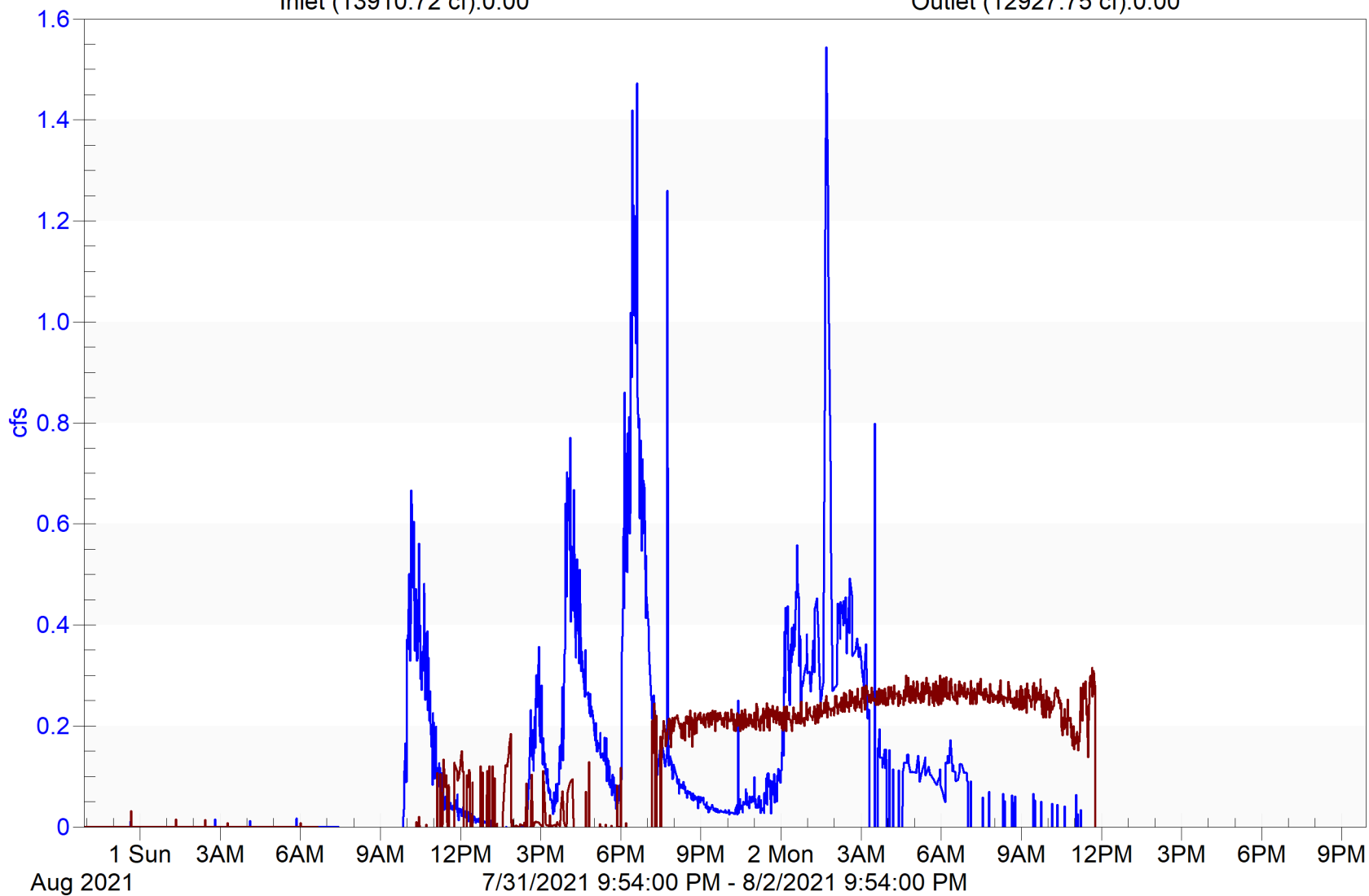


Storm 7

Kennedy Drive Wetland

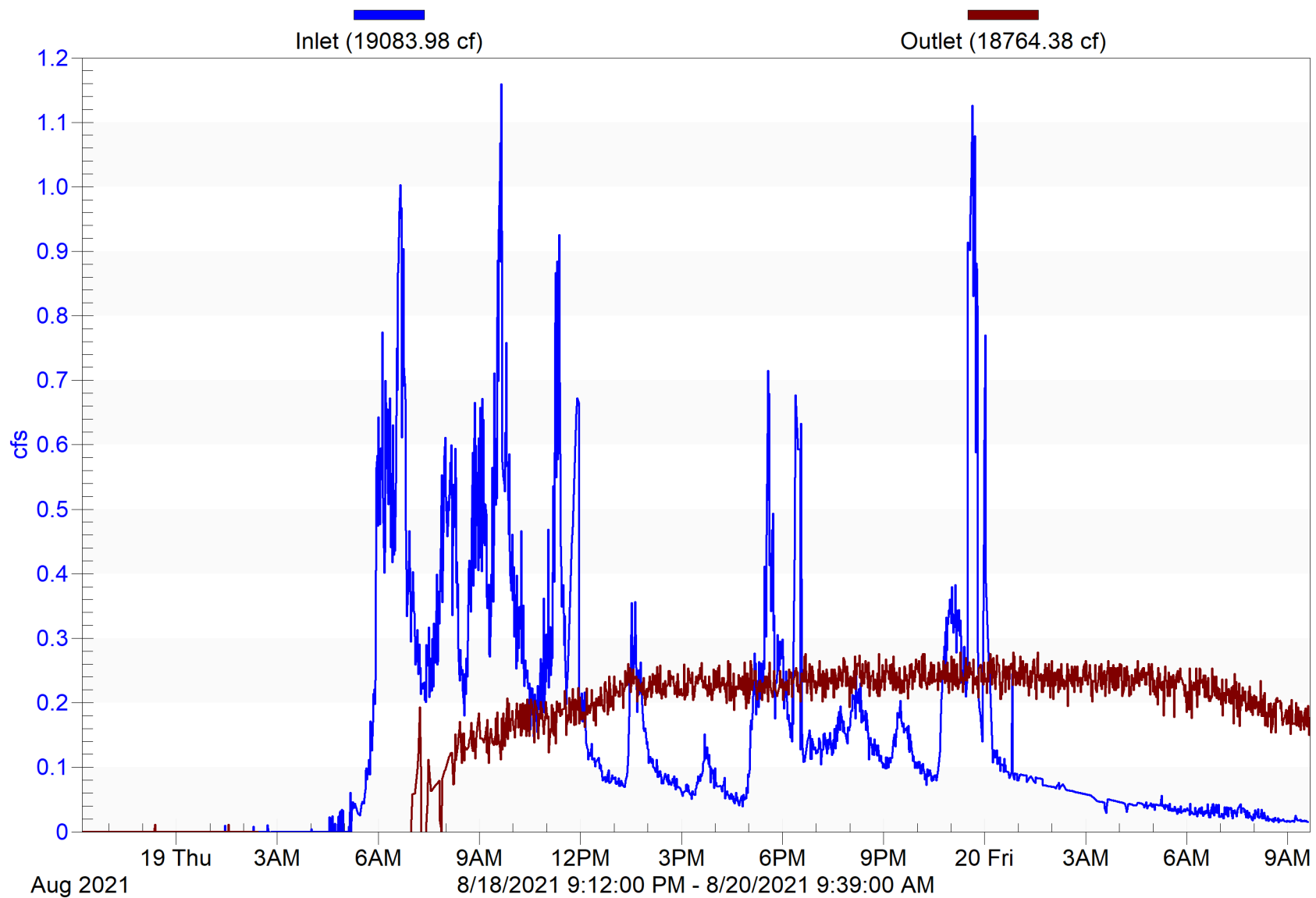
Inlet (13910.72 cf):0.00

Outlet (12927.75 cf):0.00



Storm 8

Kennedy Drive Wetland

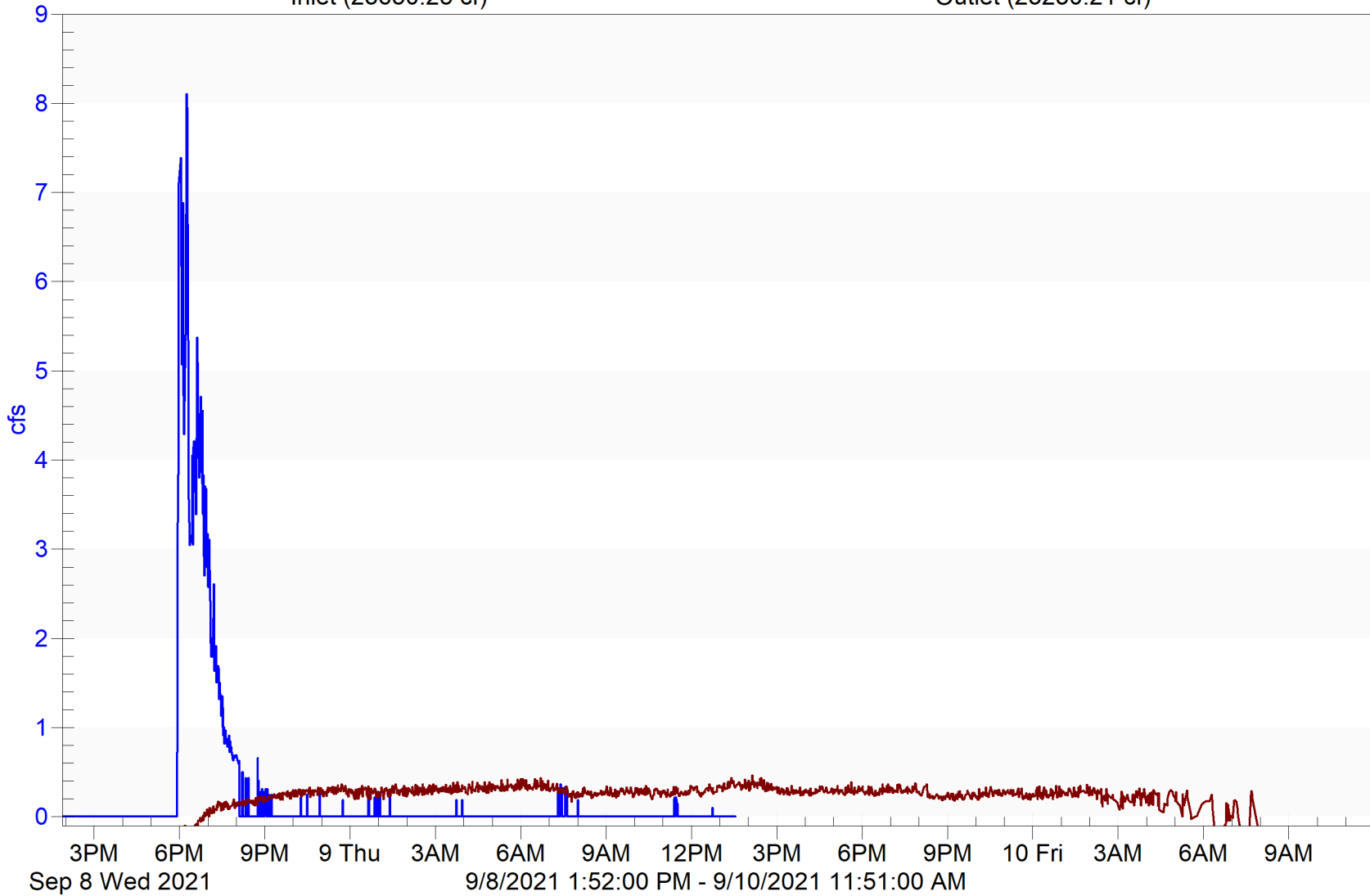


Storm 9

Kennedy Drive Wetland

Inlet (23650.25 cf)

Outlet (23230.21 cf)



Storm 10

Kennedy Drive Wetland

